



SORREL  
LUXURY APARTMENTS



## *Envision The Ideal Community*

**... One that sets the precedent for style, prestige and the ultimate in upscale living. Sorrel offers all this and more by providing impressive homes for residents to live, entertain and relax. Luxury awaits you at Sorrel!**

Our brand new community combines the perfect fusion of modern sophistication and high-speed convenience. Our impeccable location is central to the best shopping, dining and entertainment the area has to offer including St. Johns Town Center and Kernan Village. Whether your plans call for a day at the beach or enjoying the nightlife in downtown Jacksonville, Sorrel is close to it all!

Enjoy the remarkable amenities including a salt-water resort style pool with poolside gourmet grilling, the social room with a cyber/business area and billiards, the state of the art fitness center and so much more.

***Sorrel invites you to experience excellence in living.  
Make a move today and enjoy the impeccable blend of luxury, location  
and exceptional customer service!***

# *inspired* interiors

Garages & Storage Available\*  
Large Walk-In Closets\*  
Stainless Steel Appliances  
Gourmet Kitchens w/ Designer Tile Backsplash  
Upscale Wood Finish Flooring  
Home Intrusion Alarms w/ Optional Monitoring  
Two Tone Paint Color Scheme  
Garden Tubs\*  
Custom Glass Showers w/ Rain Shower Heads\*  
Stylish Track and Pendant Lighting  
Private Patio or Balcony  
Custom Routed Wood Cabinetry w/Brushed Nickel Hardware  
Lofty Nine Foot Ceilings w/ Crown Molding  
Power Saving Digital Programmable Thermostats  
2" Plantation Blinds  
Ceiling Fans w/ Lighting in Bedrooms and Living Rooms  
Full Size Washer & Dryer Included

\*in select units

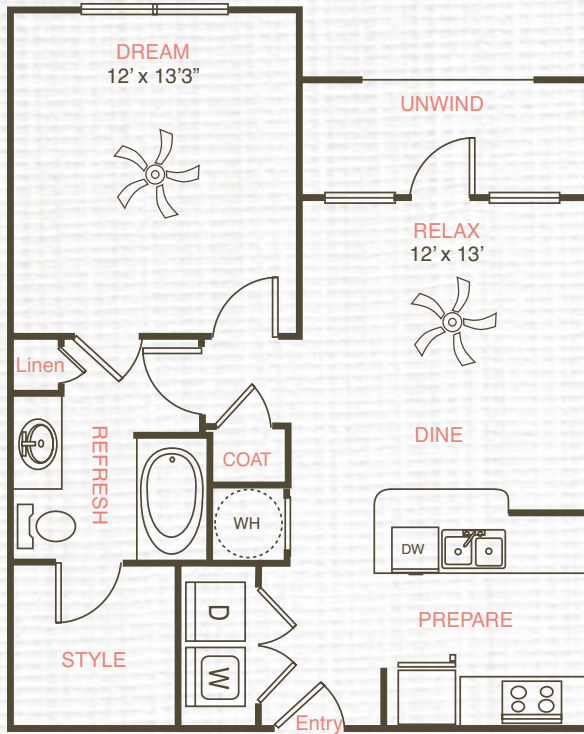
Refreshing Saltwater Pool w/ Wi-Fi Sun deck & Soothing Fountains  
Wired for Today's Technology  
Fit: LifeFitness® Cardio Theatre, Resistance & Free Weights  
Social: Media, Gaming & Cyber/ Business Area  
Online Rent Payment & Maintenance Requests  
California Outdoor Kitchen  
Leisure Courtyards for Outdoor Grilling and Dining  
Gourmet Coffee & Hot Tea Bar  
Car Care Center  
Drive-Thru Mail Kiosk  
Pet Friendly  
Dog Park

*impressive*  
attributes



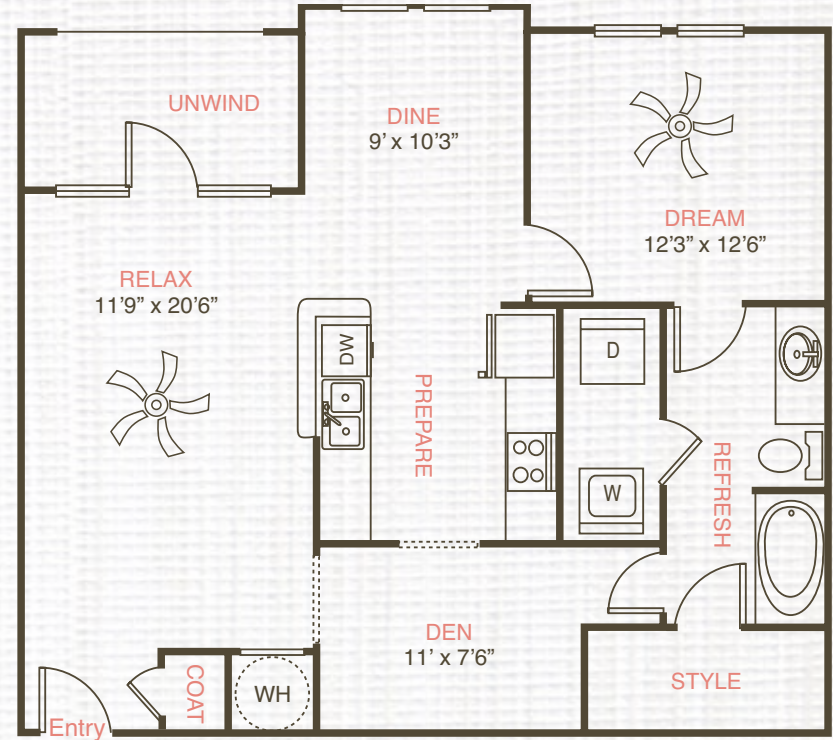
# 1 BEDROOM | 1 BATH

*distinct* floor plans



**A1**

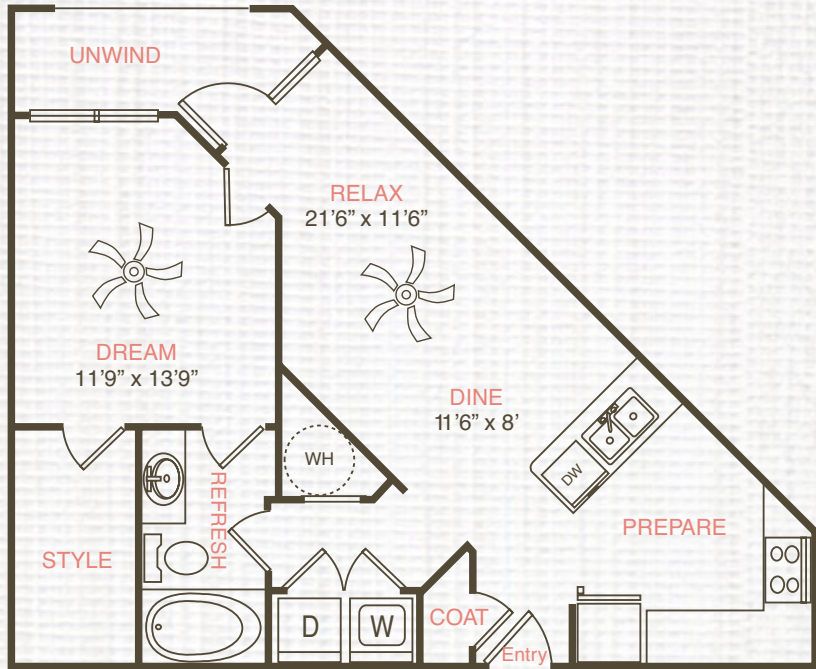
**661**  
APPROX SQ. FT



**A2**

**983**  
APPROX SQ. FT

\*exact dimensions & features may vary for each floor plan

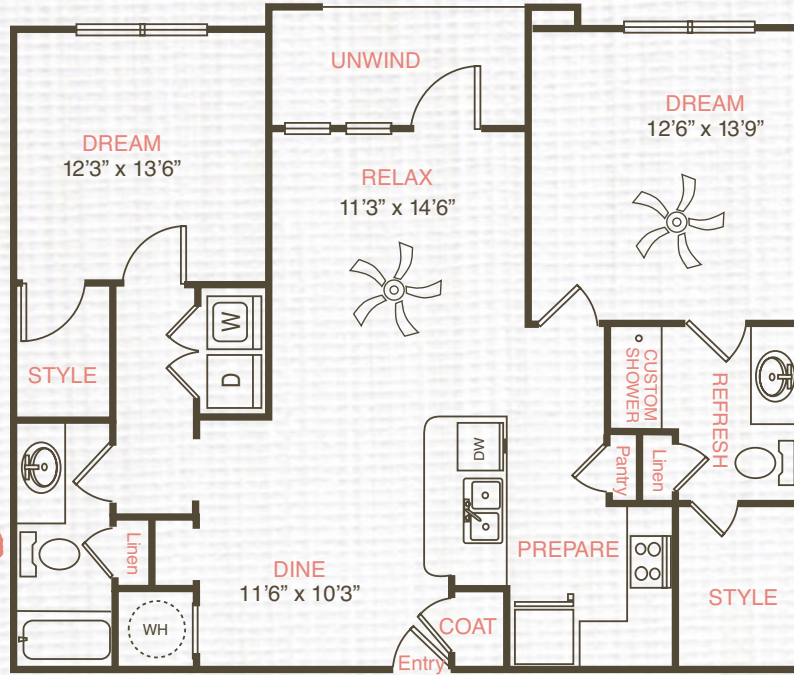


A3

815  
APPROX SQ. FT

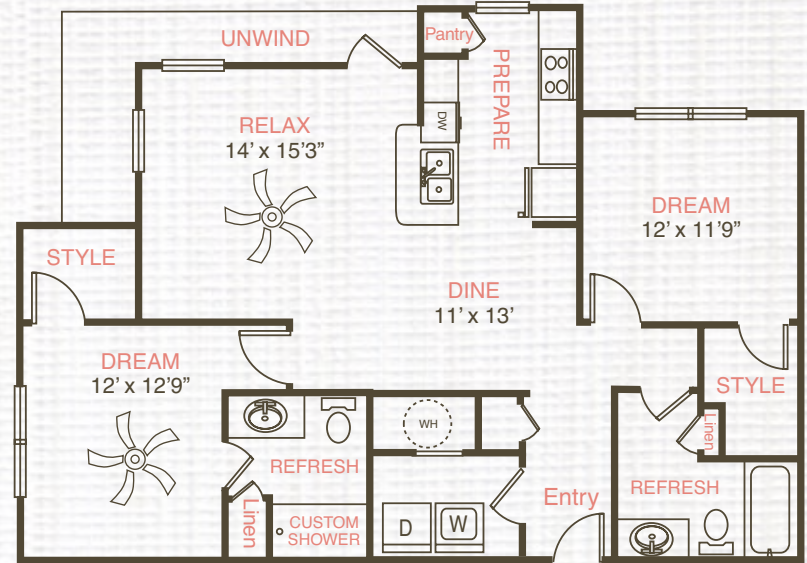
# 2 BEDROOM | 2 BATH

*expansive* floor plans



**B1**

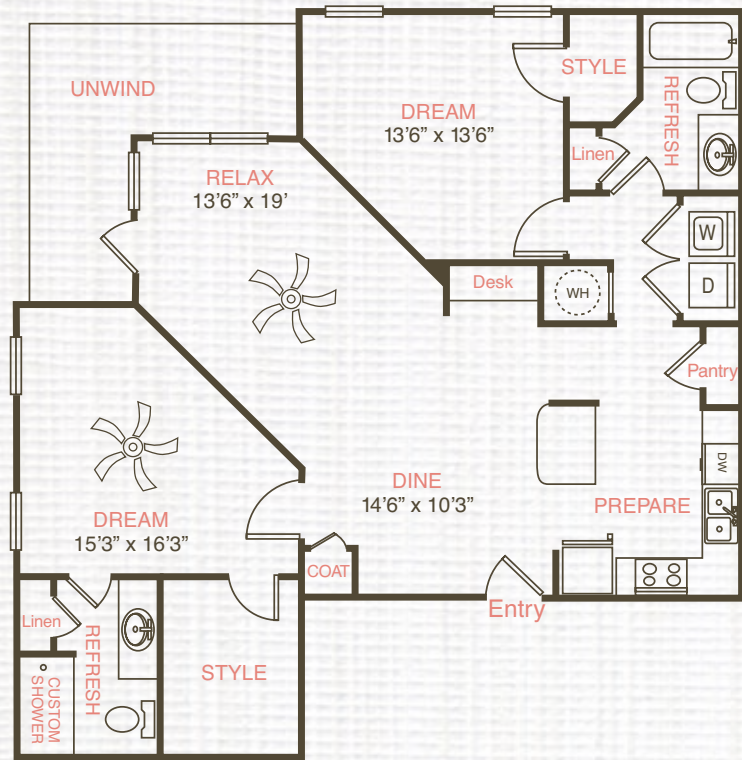
**1097**  
APPROX SQ. FT



**B2**

**1218**  
APPROX SQ. FT

\*exact dimensions & features may vary for each floor plan



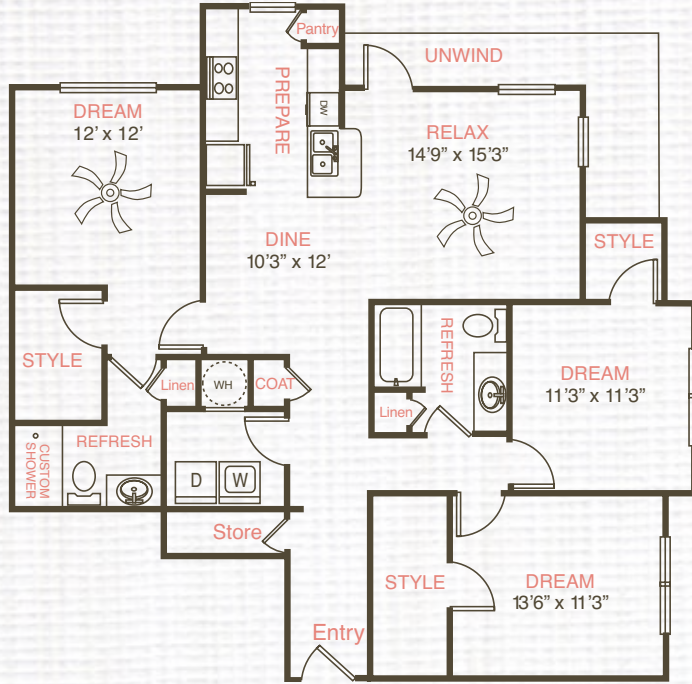
B3

1355  
APPROX SQ. FT

# 3 BEDROOM | 2+ BATH



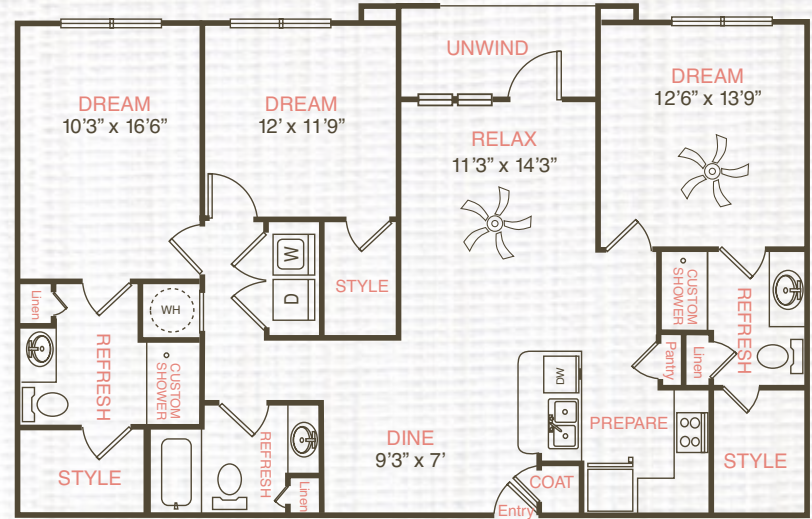
*spacious* floor plans



**C1**

**1515**  
APPROX SQ. FT

*3 bathrooms*



**C4**

**1375**  
APPROX SQ. FT

\*exact dimensions & features may vary for each floor plan





CLAIM  
YOUR  
RESIDENCE.

*Redefine* life. *Relax* lavishly. *Re-imagine* luxury.

# A NOTEWORTHY COMMUNITY

---

---

---

---

---

---

---

---





2

3

4

5

6

7

8

CLUBHOUSE

MAIL

VOLLEYBALL

DOG PARK



PAVILLION & GRILLING AREA

Location of trees for artistic purposes only.



SORREL  
LUXURY APARTMENTS





**SORREL**  
LUXURY APARTMENTS

Phone: 904.220.9333

Fax: 904-220-5666

12001 Abess Blvd | Jacksonville, FL 32225

[live@SorrelJAX.com](mailto:live@SorrelJAX.com)

[SorrelJAX.com](http://SorrelJAX.com)

